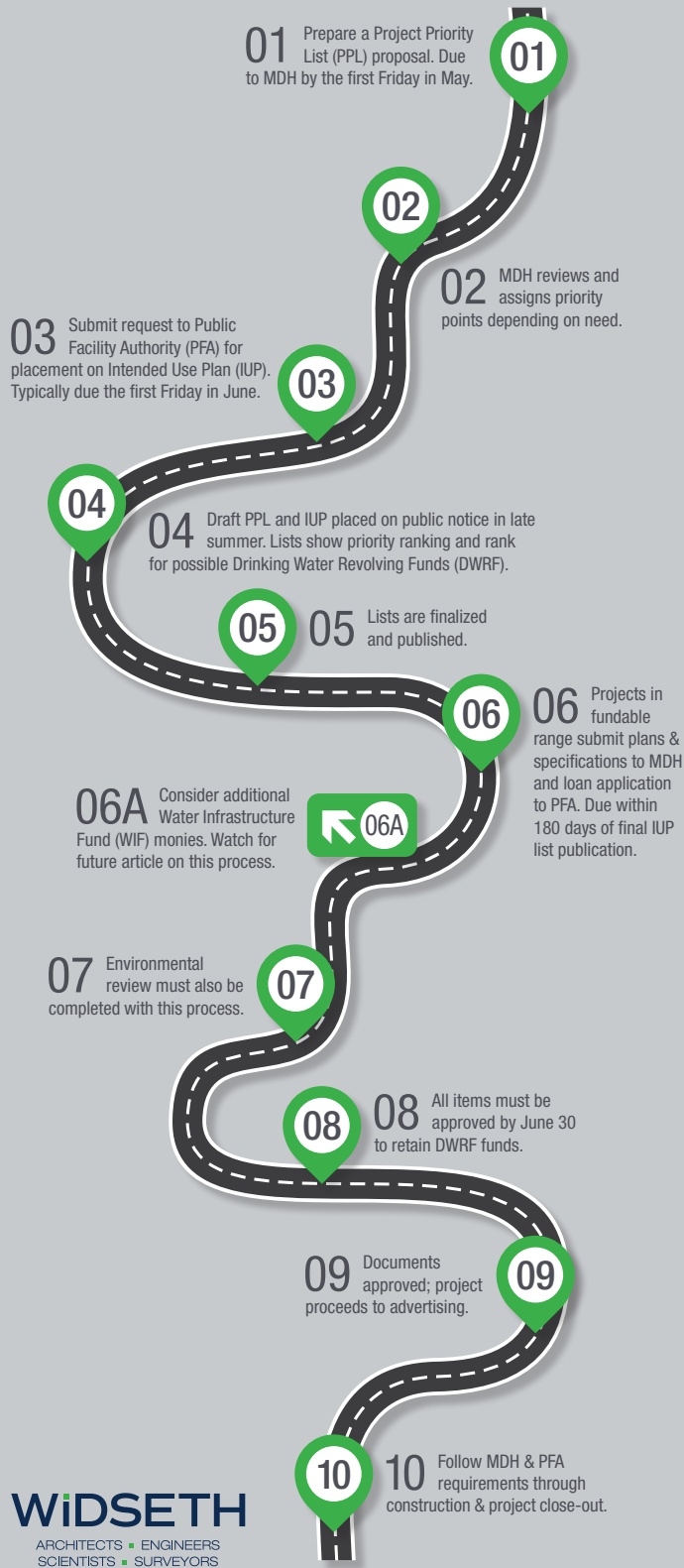


# NAVIGATE THE MN PFA FUNDING PROCESS FOR YOUR WATER PROJECT

## Drinking Water Project with PFA Funding



Widseth can help you navigate the Public Facilities Authority (PFA) process to reach your destination—a funded project.

- 01 Prepare a Project Priority List (PPL) proposal, which must be submitted to the Minnesota Department of Health (MDH) by the first Friday in May. The proposal must address the following:
  - Project owner
  - Project name
  - Contact information: system representative, proposal writer (typically your engineer)
  - Community statistics
  - Existing system description
  - Need for improvement
  - Alternatives and selected alternative
  - Cost summary
  - Project schedule
  - Maps
- 02 MDH reviews the project and assigns priority points depending on the project need. Points are assigned on public health, inadequate water supply, public drinking water infrastructure improvements, and financial need.
- 03 If the water system is ready to proceed, a request is submitted to the PFA for placement on the Intended Use Plan (IUP), which is typically due the first Friday in June.
- 04 A draft PPL and IUP is put on public notice in late summer. The lists show the priority ranking of the project and rank for possible funding with Drinking Water Revolving Funds (DWRf).
- 05 After public notice of the lists is complete, the lists are finalized and published.
- 06 Projects in the fundable range on the IUP must submit plans and specifications to MDH and loan applications to PFA within 180 days of the publication of the final IUP list.
- 06A You may want to take a side trip and consider if your project qualifies for Water Infrastructure Fund (WIF) monies. Watch for a future article that highlights this and other funds that your project may qualify for.
- 07 An environmental review process must also be completed with this process.
- 08 All items must be approved by June 30 to retain DWRf funds for the project.
- 09 After approval of the documents, the project may proceed to advertising.
- 10 The MDH and PFA will have requirements to follow throughout construction and project closeout.

It helps to have an expert navigator at your side. Widseth's engineers and funding specialists are available to help you get your project to its destination.

## WIDSETH

ARCHITECTS ■ ENGINEERS ■ SCIENTISTS ■ SURVEYORS

For more information, contact Larry Van Hout, PE, VP | [Larry.VanHout@Widseth.com](mailto:Larry.VanHout@Widseth.com) | 320-335-5014 | [Widseth.com](http://Widseth.com)